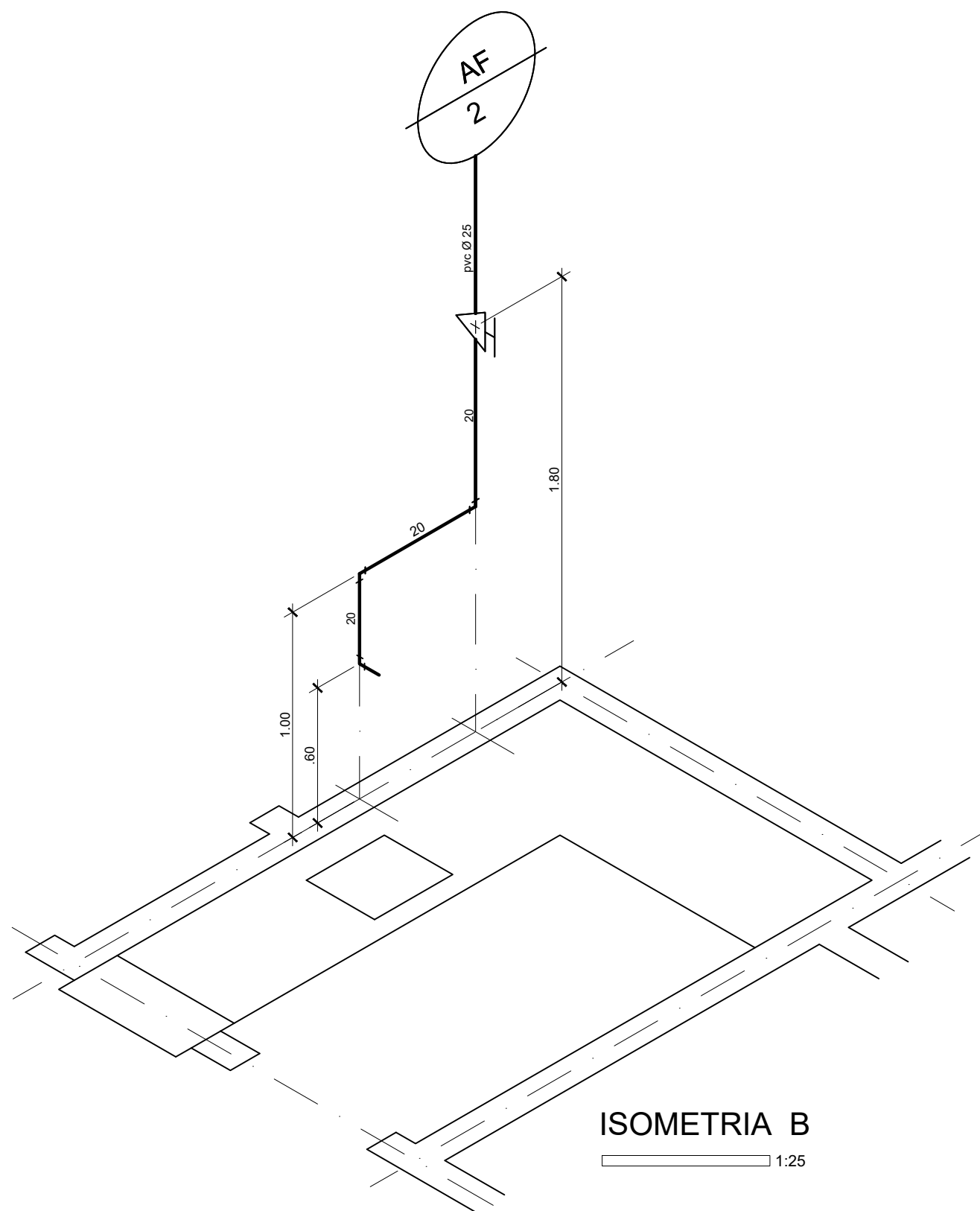
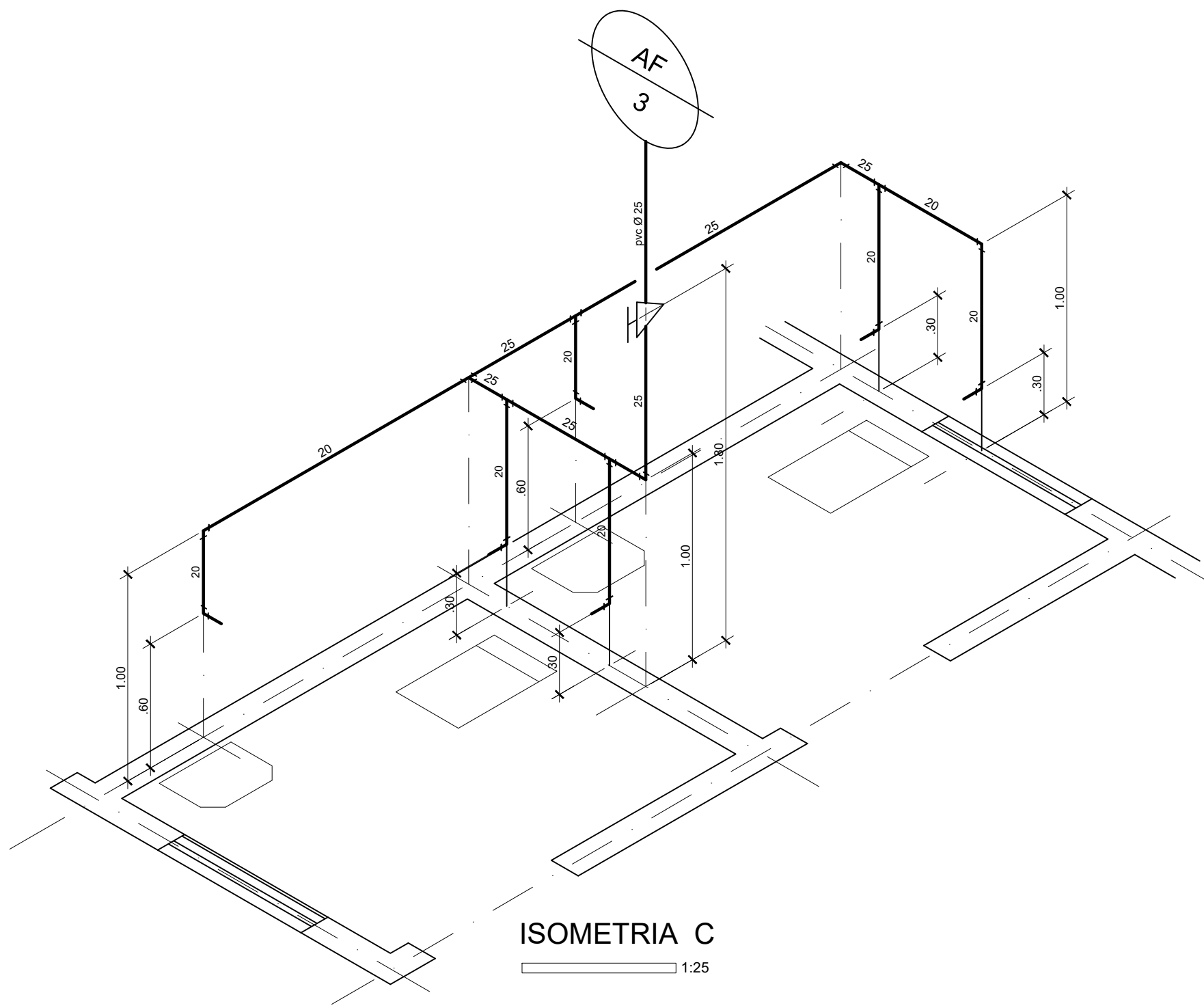


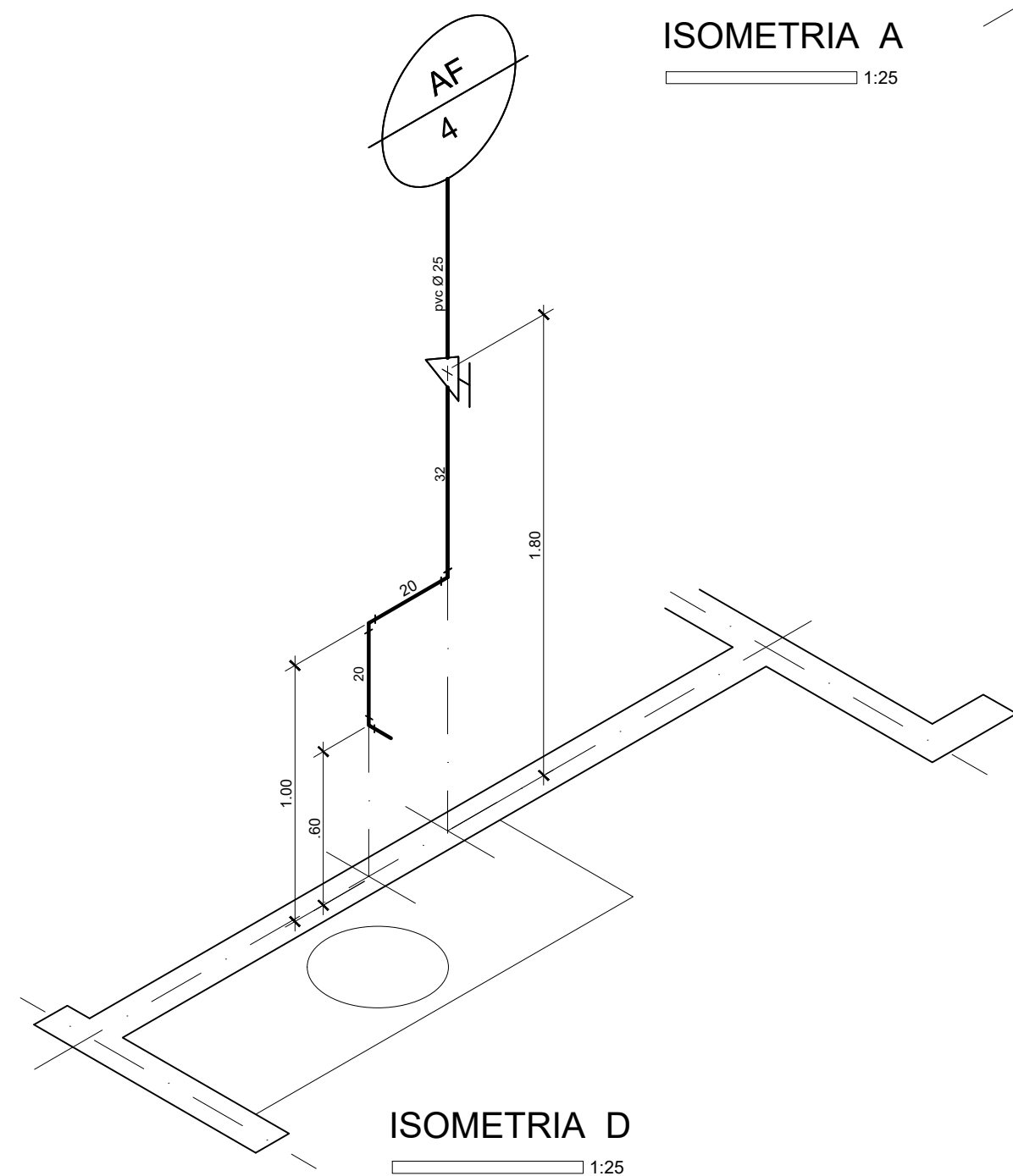
ISOMETRIA A
1:25



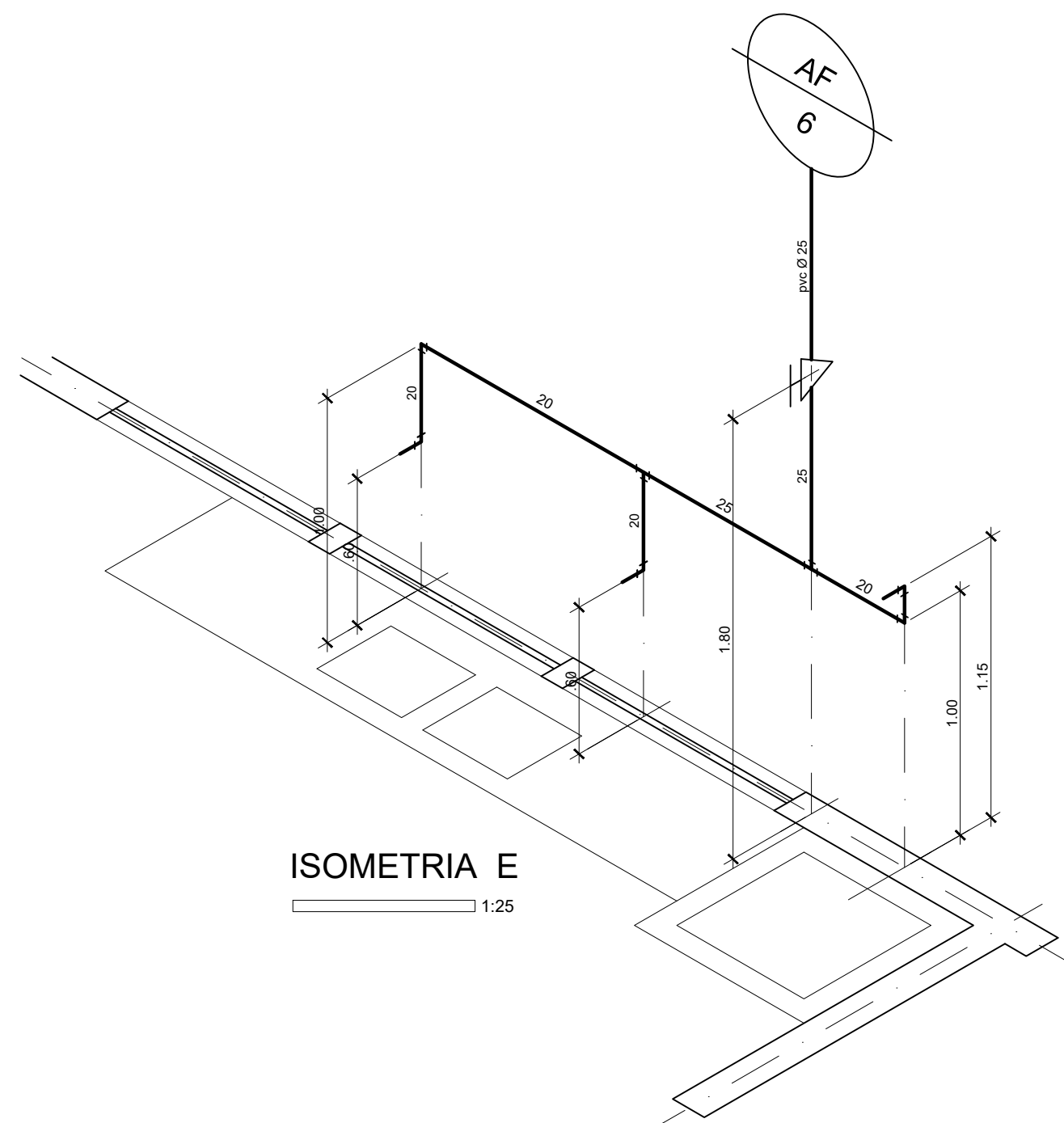
ISOMETRIA B
1:25



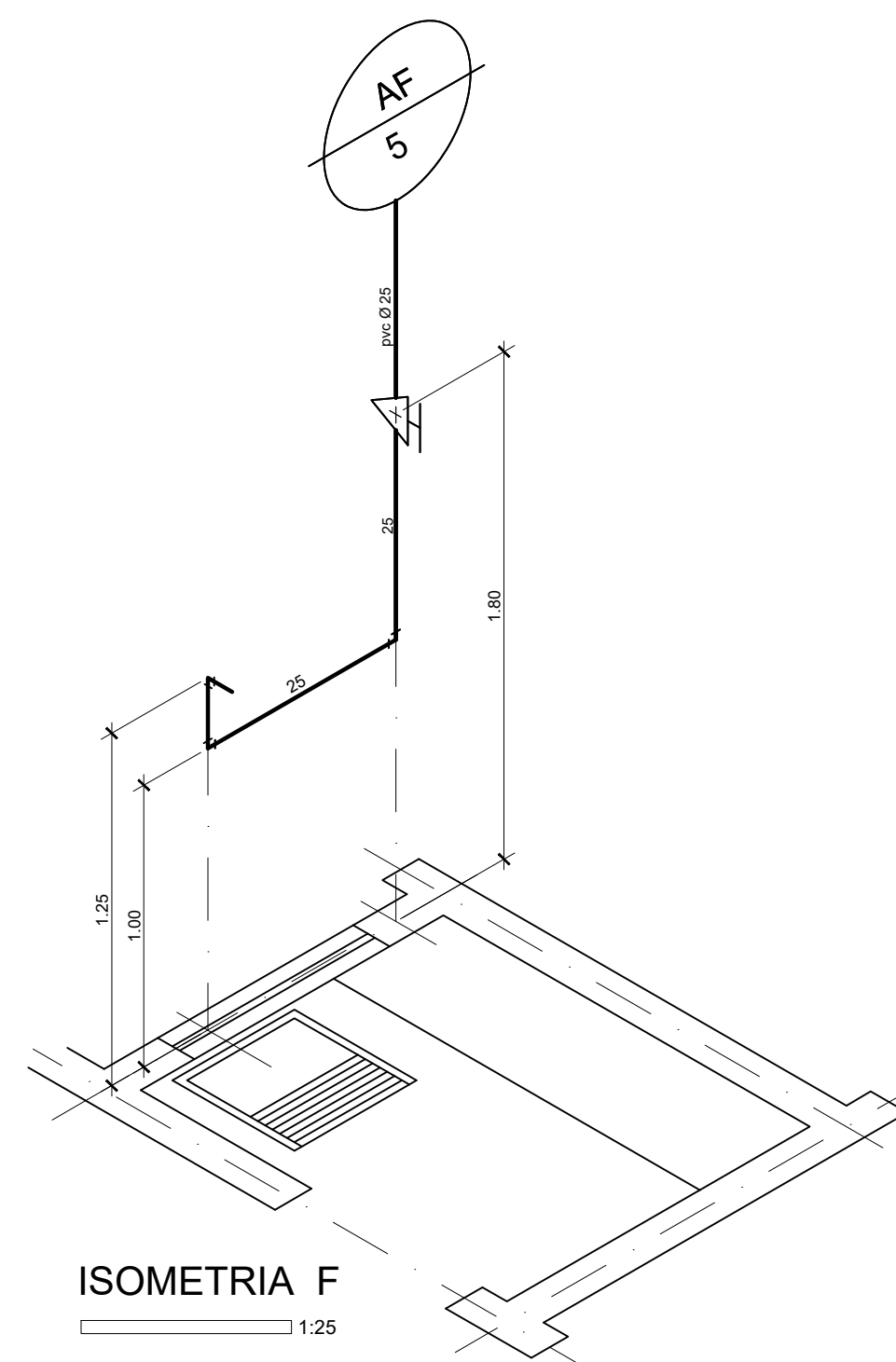
ISOMETRIA C
1:25



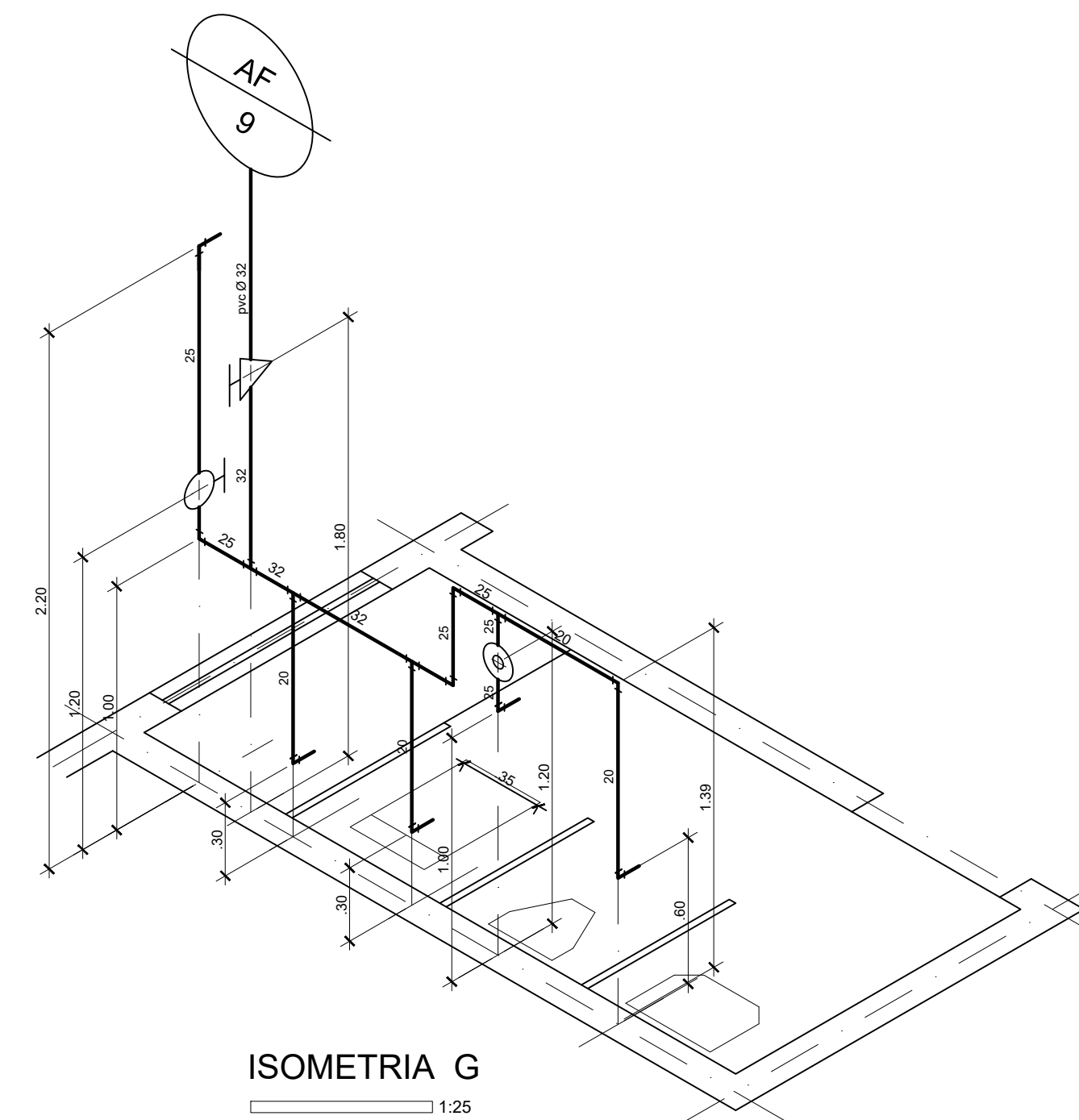
ISOMETRIA D
1:25



ISOMETRIA E
1:25



ISOMETRIA F
1:25



ISOMETRIA G
1:25

<div><div></div><div>PREFEITURA MUNICIPAL DE BARRA MANSA SECRETARIA MUNICIPAL DE PLANEJAMENTO URBANO CENTRAL DE PROJETOS</div></div>				
TÍTULO PROJETO DE INSTALAÇÕES HIDRÁULICAS				
DESCRIÇÃO Instalações Hidráulicas - Creche Municipal Barra Mansa				
REVISÃO		APPROVAÇÃO Engº Eros dos Santos S.M.P.U.	DATA Novembro/2022	FOLHA 02/03
AUTOR DO PROJETO	Arqº Abimar C. da Cunha		ESCALA	
DESENHO	Arqº Abimar C. da Cunha		INDICADA	