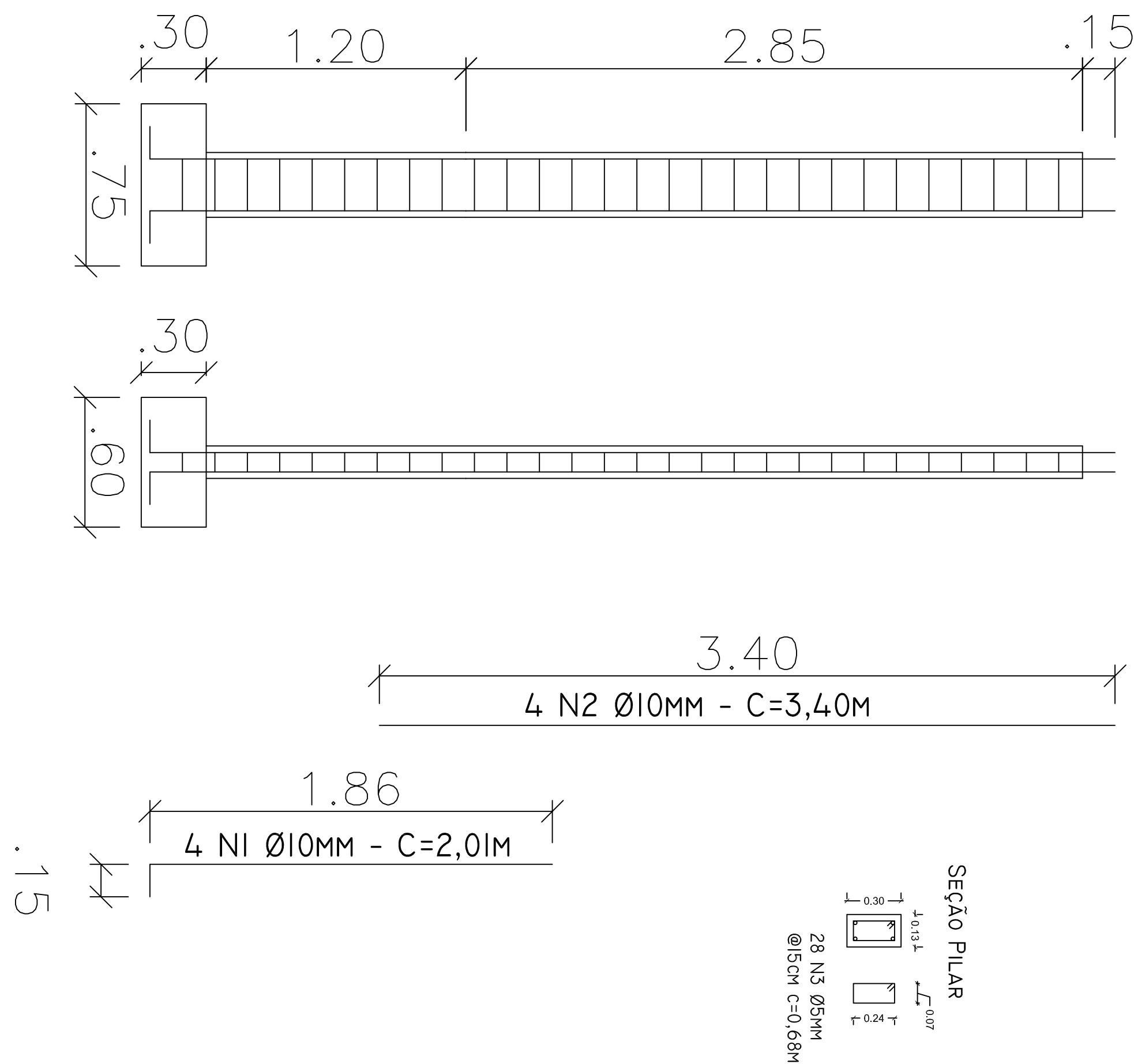
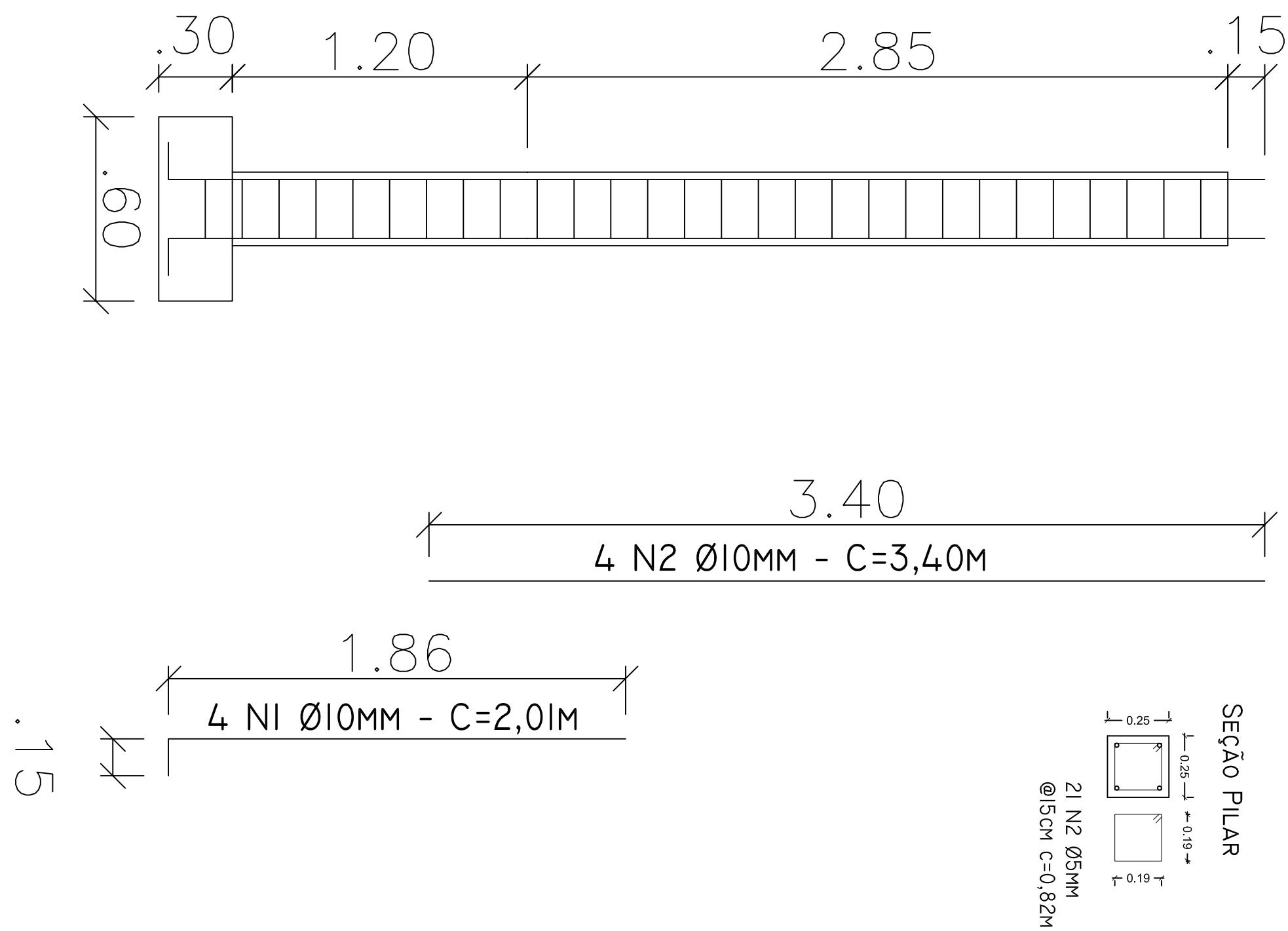


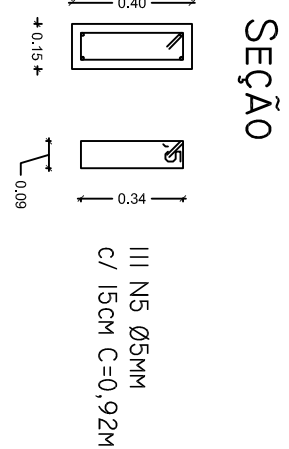
PSI, 2, 3, 4, 5, 6, 7, 8, 9 E 10  
ESCALA: 1/20



PEII, 12, 13, 14, 15, 16,  
17, 18, 19 E 20  
ESCALA: 1/20



VBS 3 E 4  
ESCALA: 1/20

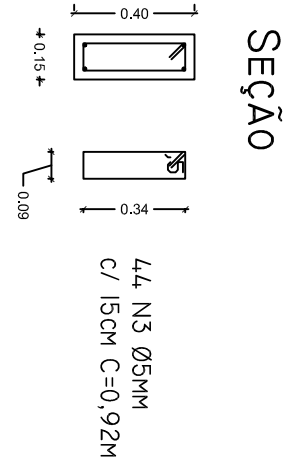


1.90

2 NI Ø8MM C=12,00M

2 N3 Ø8MM C=12,00M

VBS 5, 6, 7, 8, 9, 10, 11, 12, 13 E 14  
ESCALA: 1/20

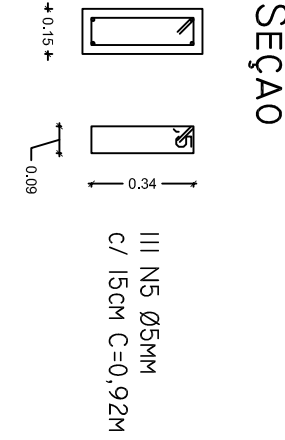


6.74

2 NI Ø8MM C=6,94M

2 N2 Ø8MM C=6,94M

VBS I E 2  
ESCALA: 1/25



1.90

2 NI Ø8MM C=12,00M

2 N3 Ø8MM C=12,00M

5.29

2 N2 Ø8MM C=5,39M

2 N4 Ø8MM C=5,39M

5.29

2 N2 Ø8MM C=5,39M

2 N4 Ø8MM C=5,39M

Vigas bidimensionais									
Vigas	A	B	L	lato(m) Com 25MPa	Forma (m³)	Ø10 (kg)	Ø8 (kg)	Ø5 (kg)	Impermeabilizante
Vbs1	0.4	0.15	16.75	0.13	1.11	13.40	0.00	30.22	17.30
Vbs2	0.4	0.15	16.75	0.13	1.11	13.40	0.00	30.22	17.30
Vbs3	0.4	0.15	16.75	0.13	1.11	13.40	0.00	30.22	17.30
Vbs4	0.4	0.15	16.75	0.13	1.11	13.40	0.00	30.22	17.30
Vbs5	0.4	0.15	16.75	0.13	1.11	13.40	0.00	30.22	17.30
Vbs6	0.4	0.15	16.75	0.13	1.11	13.40	0.00	30.22	17.30
Vbs7	0.4	0.15	16.75	0.13	1.11	13.40	0.00	30.22	17.30
Vbs8	0.4	0.15	16.75	0.13	1.11	13.40	0.00	30.22	17.30
Vbs9	0.4	0.15	16.75	0.13	1.11	13.40	0.00	30.22	17.30
Vbs10	0.4	0.15	16.75	0.13	1.11	13.40	0.00	30.22	17.30
Vbs11	0.4	0.15	16.75	0.13	1.11	13.40	0.00	30.22	17.30
Vbs12	0.4	0.15	16.75	0.13	1.11	13.40	0.00	30.22	17.30
Vbs13	0.4	0.15	16.75	0.13	1.11	13.40	0.00	30.22	17.30
Vbs14	0.4	0.15	16.75	0.13	1.11	13.40	0.00	30.22	17.30

Vigas bidimensionais									
Vigas	A	B	L	lato(m) Com 25MPa	Forma (m³)	Ø10 (kg)	Ø8 (kg)	Ø5 (kg)	Impermeabilizante
Vbs1	0.4	0.15	16.75	0.13	1.11	13.40	0.00	30.22	17.30
Vbs2	0.4	0.15	16.75	0.13	1.11	13.40	0.00	30.22	17.30
Vbs3	0.4	0.15	16.75	0.13	1.11	13.40	0.00	30.22	17.30
Vbs4	0.4	0.15	16.75	0.13	1.11	13.40	0.00	30.22	17.30
Vbs5	0.4	0.15	16.75	0.13	1.11	13.40	0.00	30.22	17.30
Vbs6	0.4	0.15	16.75	0.13	1.11	13.40	0.00	30.22	17.30
Vbs7	0.4	0.15	16.75	0.13	1.11	13.40	0.00	30.22	17.30
Vbs8	0.4	0.15	16.75	0.13	1.11	13.40	0.00	30.22	17.30
Vbs9	0.4	0.15	16.75	0.13	1.11	13.40	0.00	30.22	17.30
Vbs10	0.4	0.15	16.75	0.13	1.11	13.40	0.00	30.22	17.30
Vbs11	0.4	0.15	16.75	0.13	1.11	13.40	0.00	30.22	17.30
Vbs12	0.4	0.15	16.75	0.13	1.11	13.40	0.00	30.22	17.30
Vbs13	0.4	0.15	16.75	0.13	1.11	13.40	0.00	30.22	17.30
Vbs14	0.4	0.15	16.75	0.13	1.11	13.40	0.00	30.22	17.30

P.M.B.M.	SECRETARIA MUNICIPAL DE PLANEJAMENTO URBANO
PROJETO ESTRUTURAL	FOLHA: 14/22

DESCRIÇÃO : DETALHAMENTO DAS VIGAS E PILARES

PROPRIETÁRIO : PREFEITURA MUNICIPAL DE BARRA MANSA  
LOCAL : COLÔNIA SANTO ANTÔNIO

QUADRO DE ATIVIDADES		SELO DE APROVAÇÃO PABM	
DATA:	11/11/2022	SELO DE APROVAÇÃO PABM	
SECRETÁRIO	AUTOR DO PROJETO	DESENHO	
ENOS DOS SANTOS	ENG.º ARLINDO P. DE OLIVEIRA	ENG.º ARLINDO P. DE OLIVEIRA	
REVISÃO 1	REVISÃO 2	N.º ARQUIT.º	
REVISÃO 3	REVISÃO 4	N.º DO PROJETO	

CALIMBO

APPROVAÇÃO SMPU