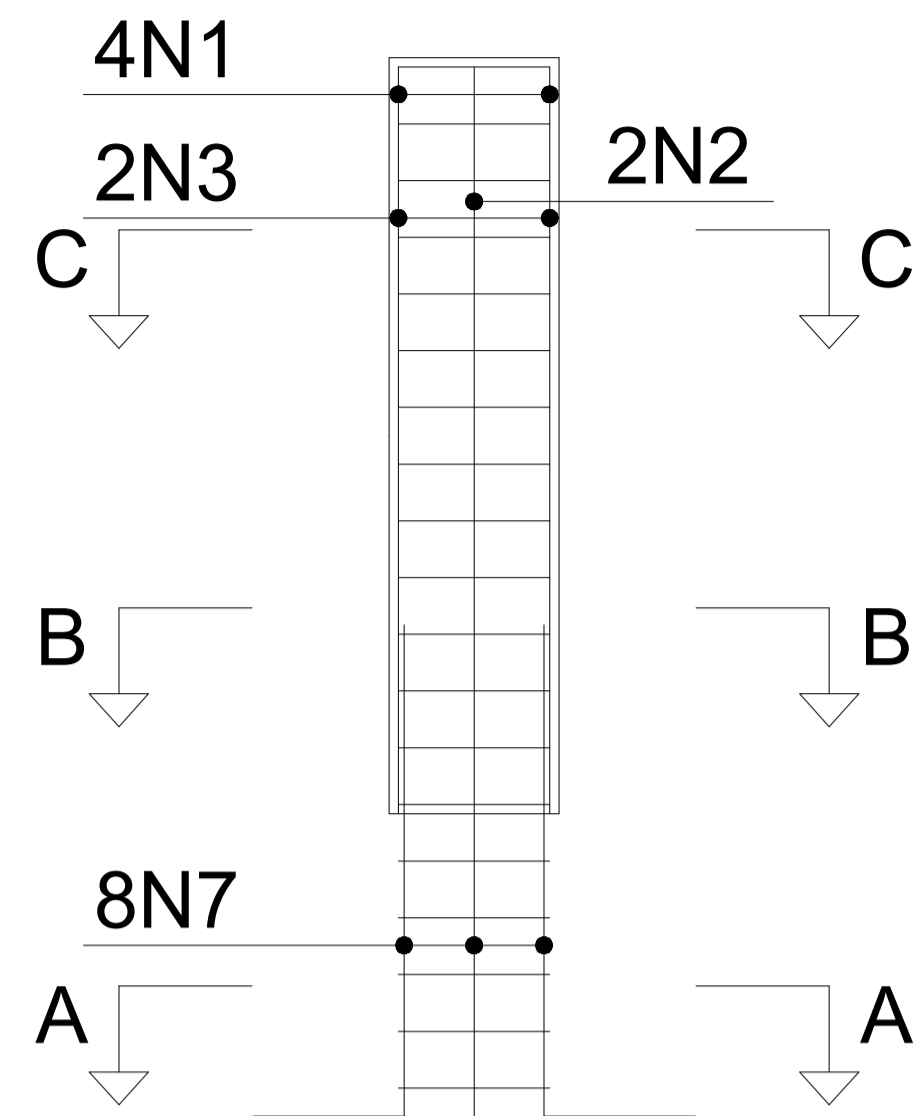
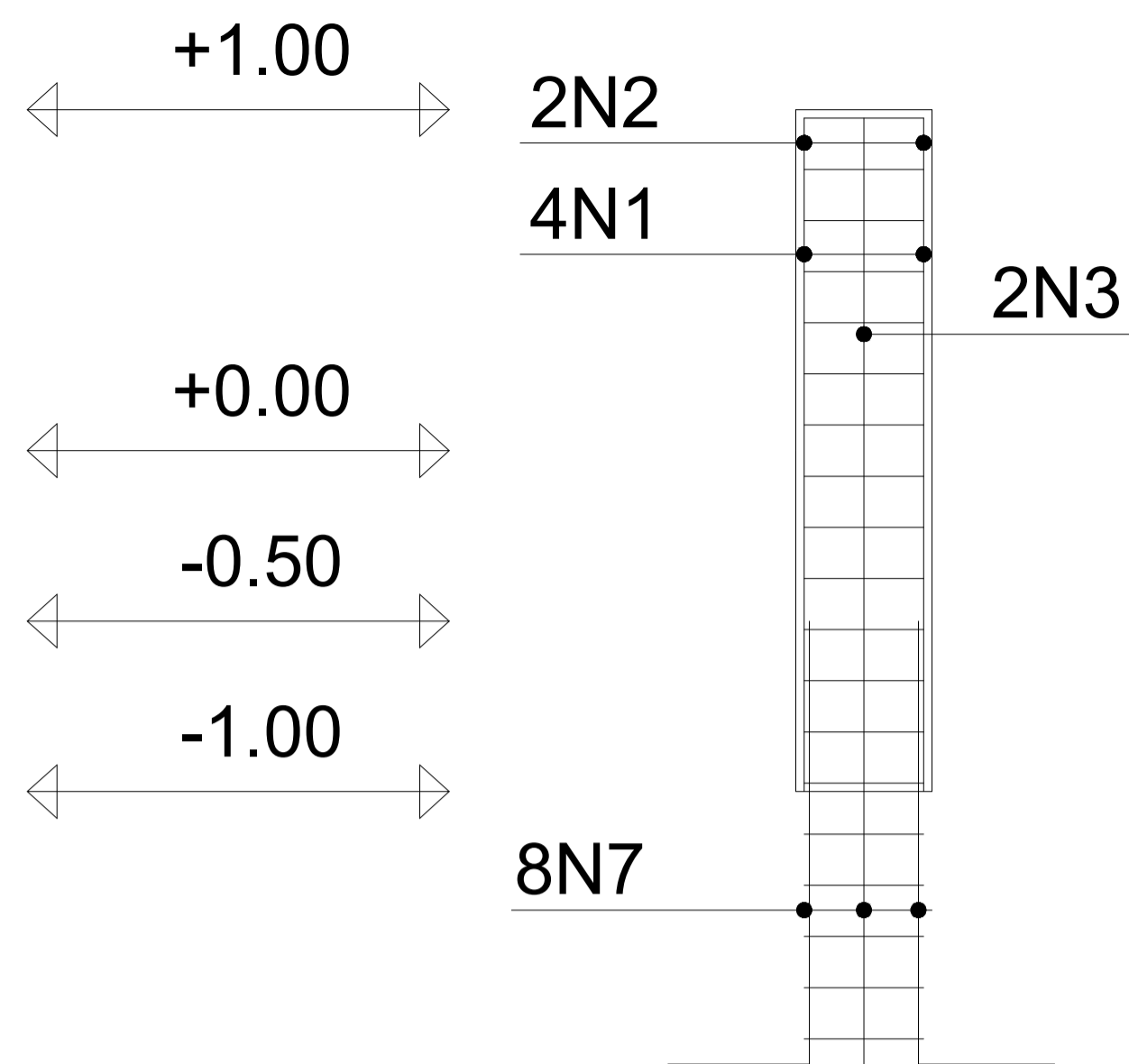


PISO 2  
PISO 1  
FUNDAÇÃO

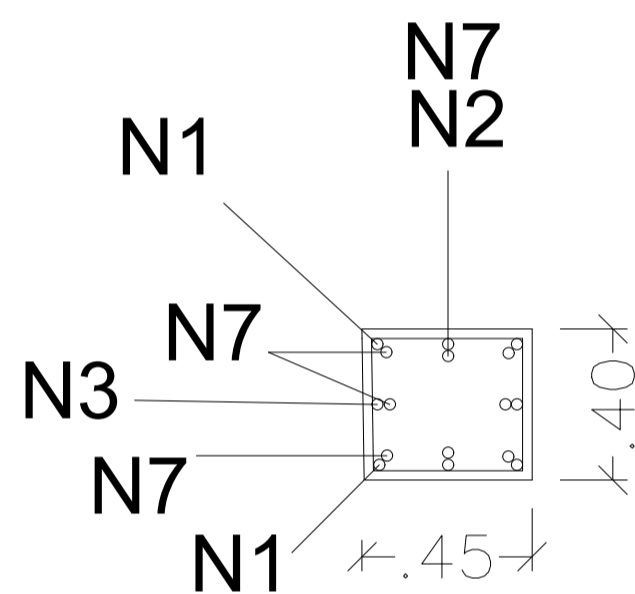
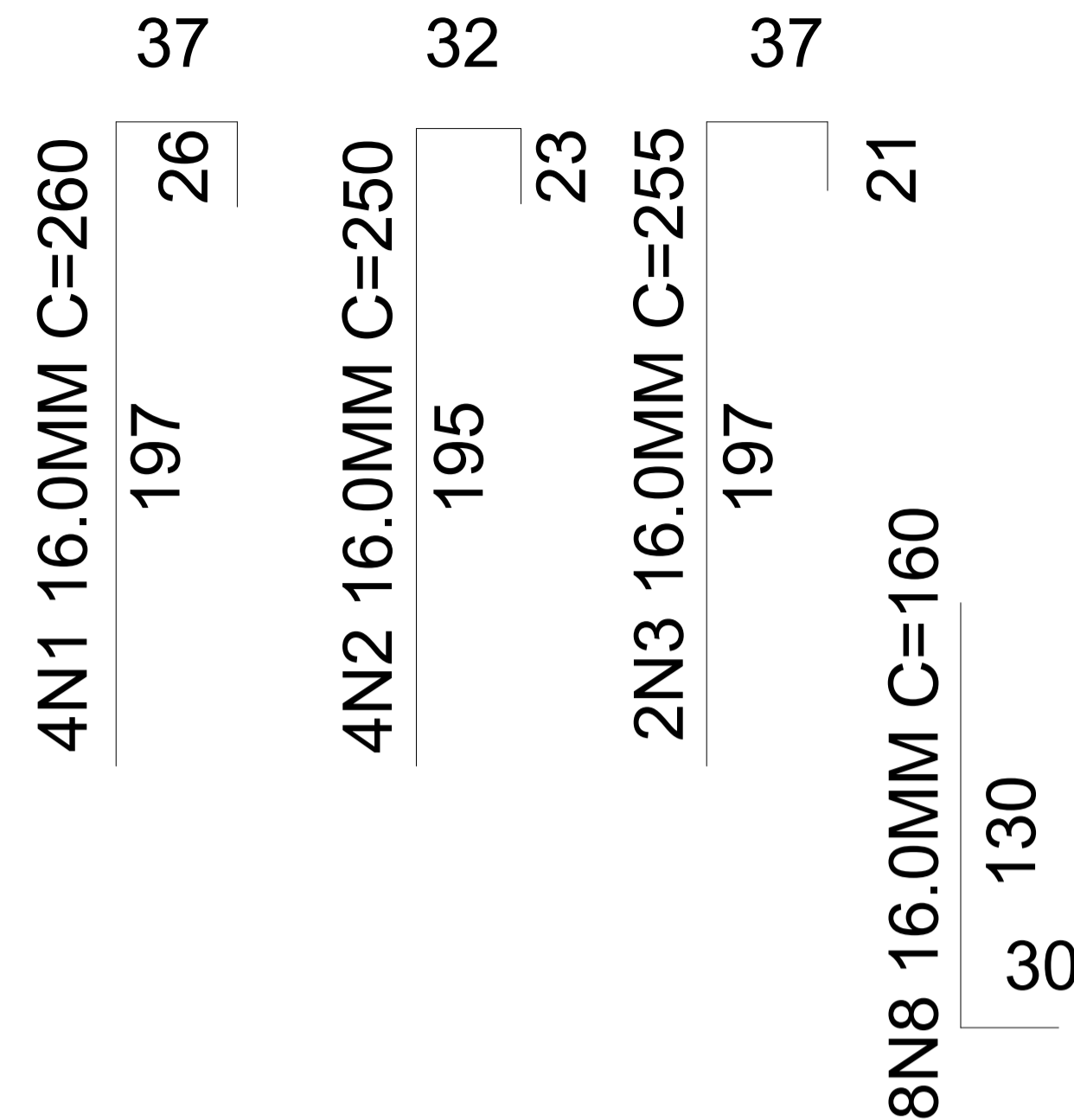


VISTA XX  
esc 1:20



VISTA YY  
esc 1:20

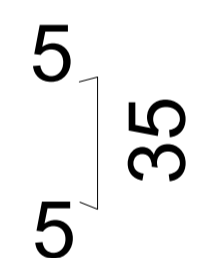
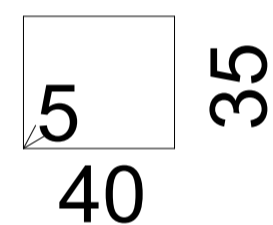
N4,N5,N6 c/15 N4,N5,N6 c/15  
7 6.3MM 7 6.3MM  
.05 .90 .10 .90 .05



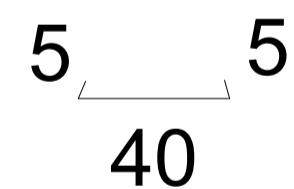
4N1 16.0MM  
2N2 16.0MM  
2N3 16.0MM  
8N7 16.0MM

CORTE B-B  
esc 1:20

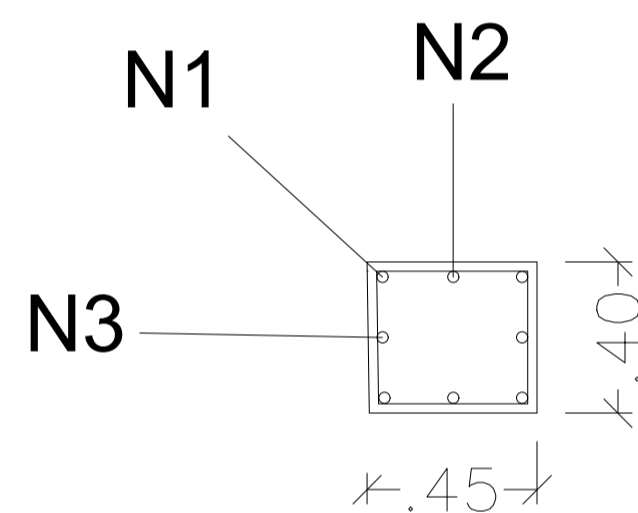
N4 6.3MM c/15 C=159



N5 6.3MM c/15 C=47



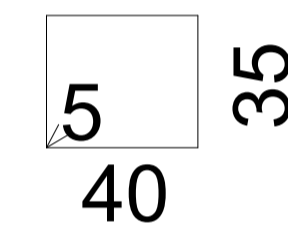
N6 6.3MM c/15 C=52



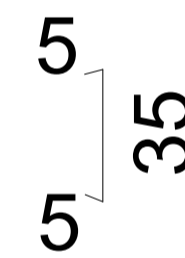
CORTE C-C  
esc 1:20

4N1 16.0MM  
2N2 16.0MM  
2N3 16.0MM

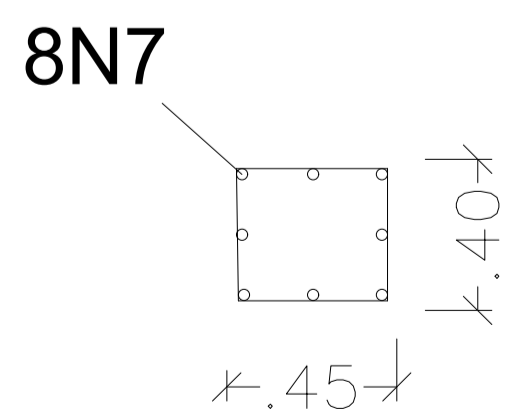
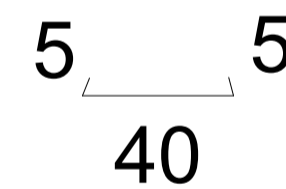
N4 6.3MM c/15 C=159



N5 6.3MM c/15 C=47



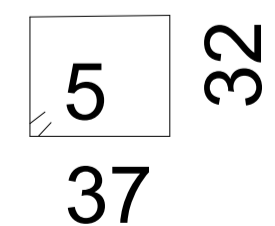
N6 6.3MM c/15 C=52



8N7 16.0MM

CORTE A-A  
esc 1:20

N8 6.3MM c/17 C=146



PREFEITURA MUNICIPAL DE BARRA MANSA  
SECRETARIA DE PLANEJAMENTO URBANO  
CENTRAL DE PROJETOS

TÍTULO		Nº do desenho	
QUADRA POLIESPORTIVA			
DESCRIÇÃO			
REFORMA DE QUADRA POLIESPORTIVA E ARREDORES DO COLÉGIO MUNICIPAL MARCELO DRABLE.			
FUNDAÇÃO EM CONCRETO ARMADO / ESTACAS			
REVISÃO	01	APROVAÇÃO	DATA
AUTOR DO PROJETO	Engº Patrick de Barros		27/10/2021
DESENHO	Engº Patrick de Barros	Eros dos Santos	ESCALA
			indicada
			FOLHA
			1/2